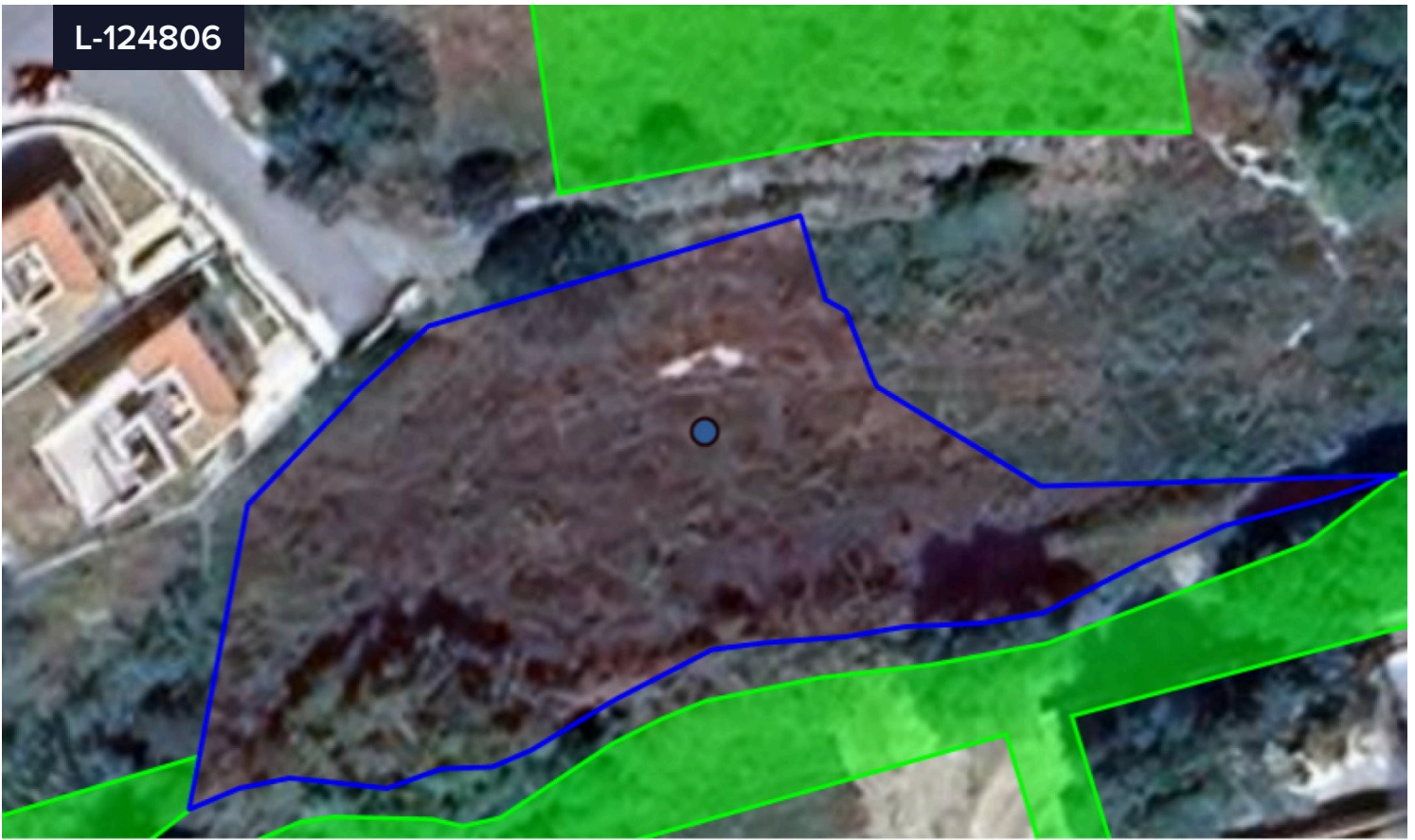



L-124806



## Land For Sale In Konia Paphos Cyprus

€175,000 <sup>+VAT</sup>

 Konia, Paphos

Area

 1673 m<sup>2</sup>

Type

Field

Title deed

Yes

The property located in Konia community within Paphos district.

It has good size, irregular shape with light topographical differences and offers nice views to the surrounding area.

The land has access to public road.

The property lies within Planning Zone Ka8 with a maximum building ratio of 60%, coverage ratio of 35%, on 2 floors and maximum height of 10,00m.

It is covered by all necessary authorities for water supply, electricity and telecommunications.

