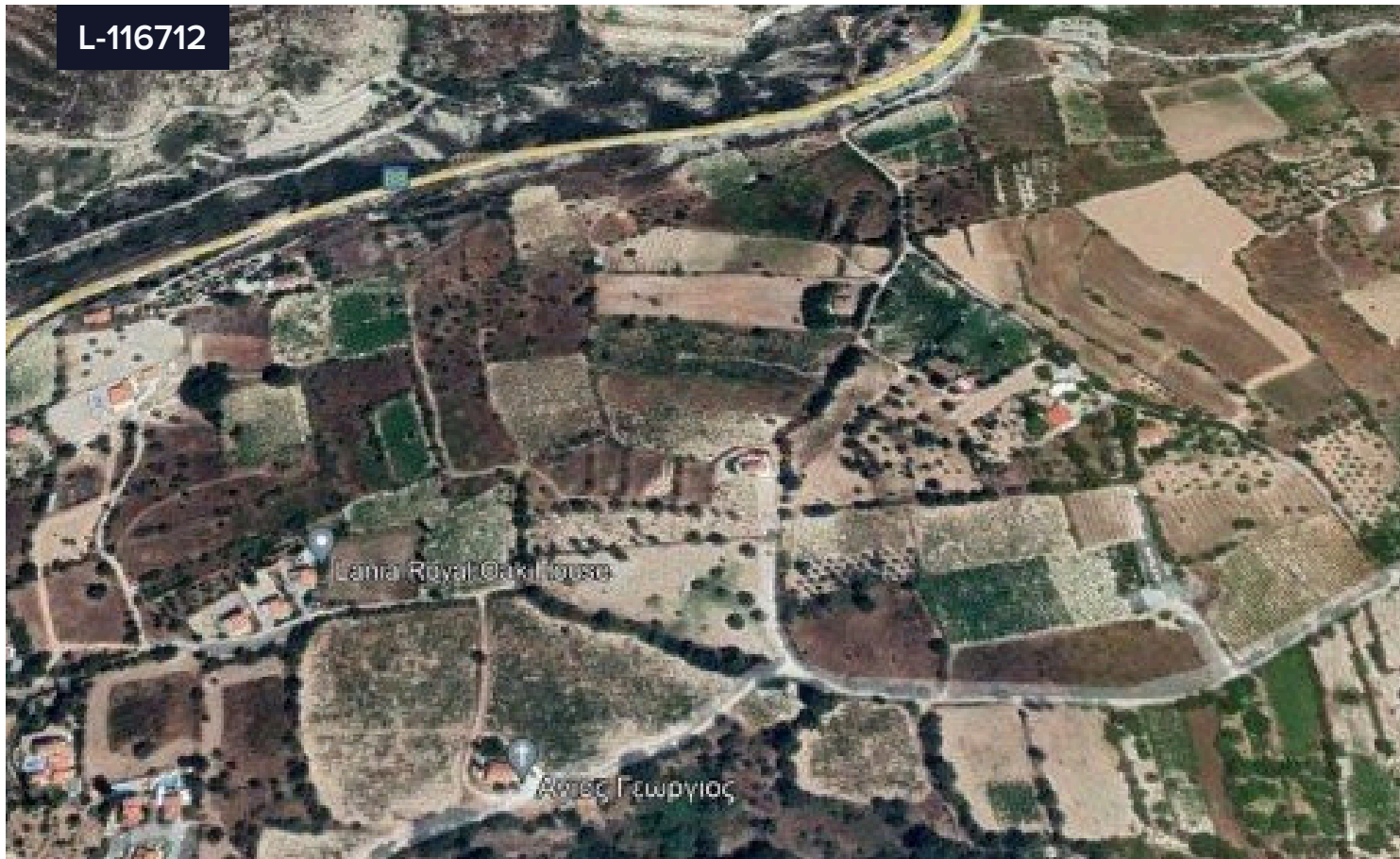


L-116712



## Land For Sale In Laneia Limassol Cyprus

€140,000 <sup>+VAT</sup>

 Laneia, Limassol

Area

 3828 m<sup>2</sup>

A nice 3828sqm residential land with panoramic view in Laneia village in Limassol. The property is close to all amenities, 25 minutes driving distance from Limassol. It has 20% building density, 20% coverage, 2 floors allowance, road, water, electricity. Call us for more information and viewing.

Type

Field

Title deed

Yes

