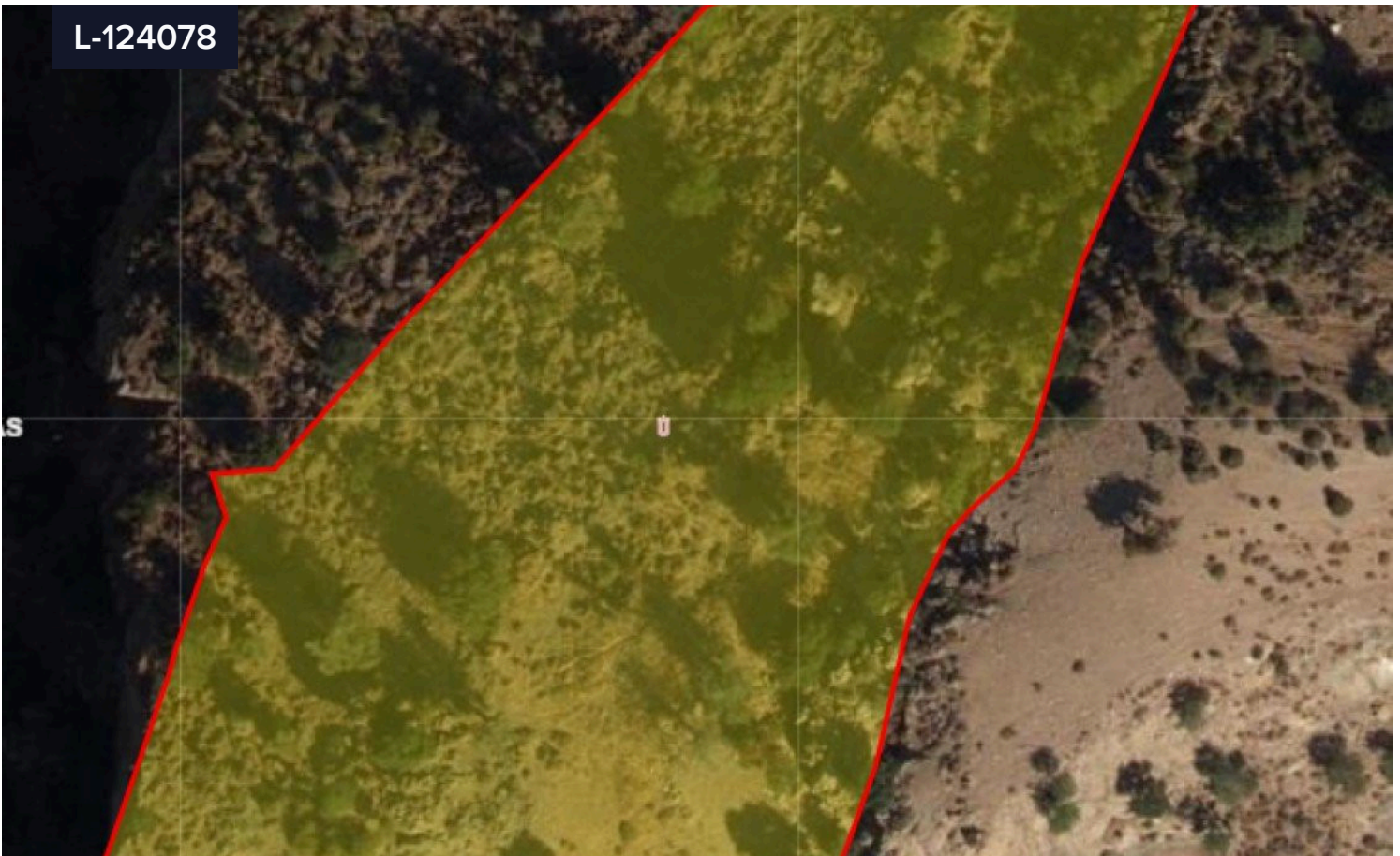


L-124078



Land For Sale In Pegeia Paphos Cyprus

€65,000

 Pegeia, Paphos

Area

 7358 m²

Agricultural land located in Pegeia, Paphos. The size of the land is 7358 square meters. Falls into

Pegeia is situated mainly on the steep slopes of the coastal hills inland from Coral Bay, at the southern end of the Akamas Peninsula, and it lies 14 km northwest of Paphos. It has a large British population and a growing number of holiday homes and apartments. In the town centre can be found the town hall, a church, a police station and several small shops, restaurants and banks. Due to its hillside location many parts of the town offer views over Coral Bay and Paphos.

This asset is landlocked.

Type

Field

Title deed

Yes

