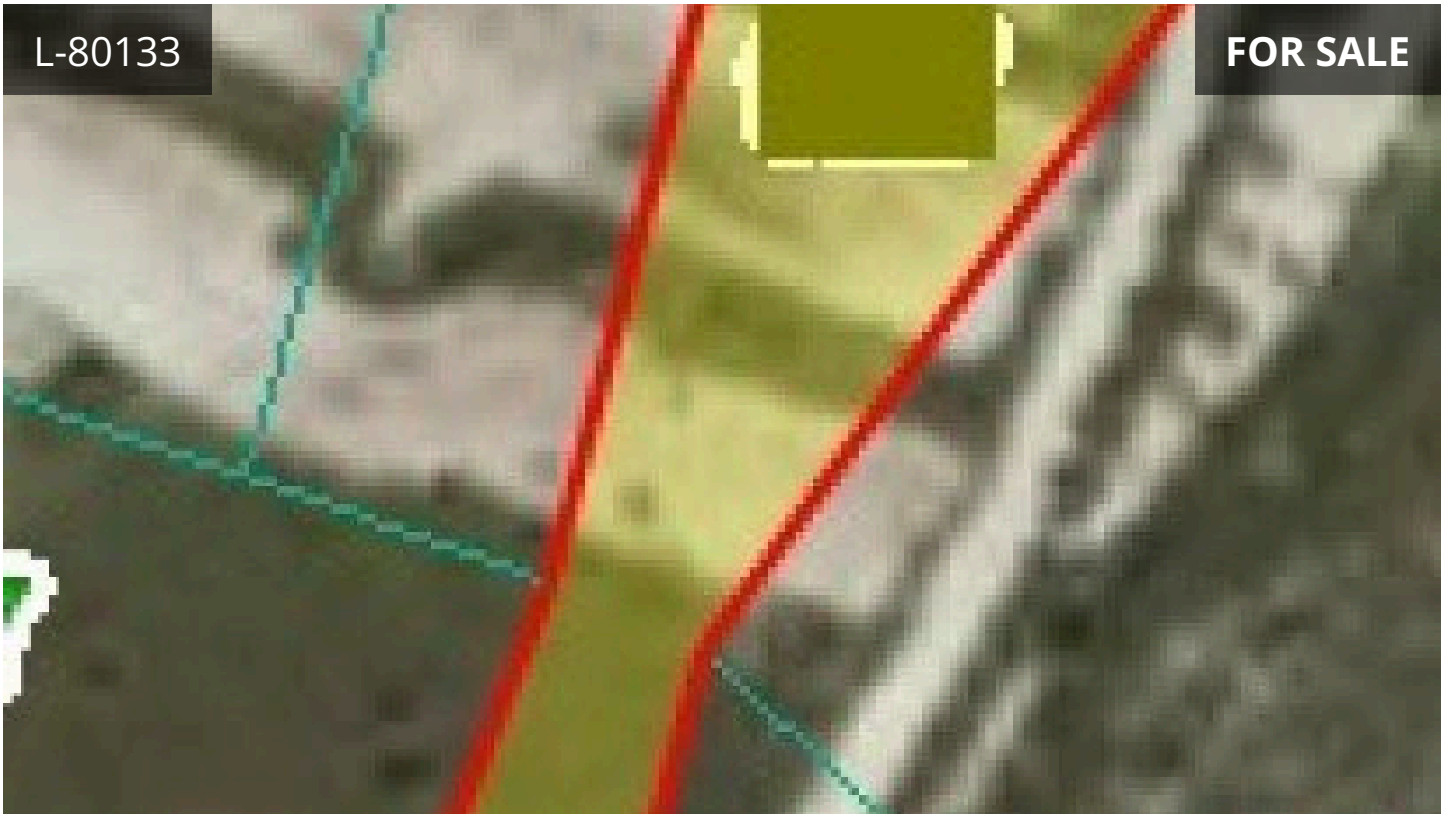


L-80133

FOR SALE



## Limassol, Silikou

1236 m<sup>2</sup> Area



## Description

A beautiful semi-mountainous village in the Kouris valley with a boisterous medieval history and a changing and variable fate, and an important stop on the winery roads with place names, Silikou village is around 20 km from Limassol. The build density is 10% and a coverage of 10% also. A maximum of 2 floors is allowed to be built so the land would be ideal for a summer home.

€15,000

<b>TYPE</b>	Field
<b>PLOT</b>	1236 m <sup>2</sup>
<b>TITLE DEED</b>	Yes



foxrealty.eu